

## LAUNCHING WASH WEEK – FRIDAY 6TH

### Camera, Action, Launch 1

7.30pm – *The Wash Discovery Centre, Green Quay, King’s Lynn, Norfolk.*

Join the partners of The Wash Estuary Strategy Group and the winners of The Wash Photographic Competition at this evening event launching Wash Week 2010.

**Booking essential. Contact: 01406 425518.**

## THROUGHOUT THE WEEK: 7-15TH

### The Wash Through the Eye of a Lens 1 15 4

View the winning images from the Wash Week 2011 Photographic Competition at locations around The Wash and North Norfolk Coast such as:

*Daily 9am to 5pm – The Wash Discovery Centre, Green Quay, King’s Lynn, Norfolk.*

*Daily 9am to 4pm, except on Sundays 1pm to 4pm – St Matthew’s Church, Lumley Avenue, Skegness, Lincolnshire; and 2*

*Daily 10am to 4pm – Gibraltar Point Nature Reserve, Skegness, Lincolnshire. 4*

**For further locations see the Wash Estuary Project website:**

**www.washestuary.org.uk**

### Display of Heritage Trail Project 15

*Daily from Saturday 7th to Sunday 15th 9am to 4pm, Sundays 1pm to 4pm – St Matthew’s Church, Lumley Avenue, Skegness, Lincolnshire.*

The Skegness Heritage Project complete with a Heritage Trail is being planned, and this display will offer an overview of current ideas and plans. There will be leaflets, posters and computer presentations showing the various sites of historical interest in the Skegness area.

**Cost: FREE.**

**Booking not required, just drop in! Contact: 01754 612414.**

### Collection of Perceptions, Traditions, Stories, Myths and Legends for the Lincolnshire Coastal Grazing Marsh Project 15

*Daily from Saturday 7th to Sunday 15th 9am to 4pm, Sundays 1pm to 4pm – St Matthew’s Church, Lumley Avenue, Skegness, Lincolnshire.*

This is an opportunity to tell us about your favourite places or features of the Lincolnshire Coastal Grazing Marsh (LCGM) so we can develop the historic and natural environment to your needs. The LCGM focuses on the region from Chapel St Leonards to Saltfleetby and inland to Burgh le Marsh. We are also looking for forgotten traditions, stories, myths, legends and folklore to ensure they are not lost forever! The best stories will be published in our newsletter and used in the project.

**Cost: FREE.**

**Booking not required, just drop in! Contact: 01754 612414.**

**Website: www.lincsmarshes.org.uk**

### National Coastwatch Institution (NCI) (Skegness Branch) Display 15

*Daily from Saturday 7th to Sunday 15th 9am to 4pm, Sundays 1pm to 4pm – St Matthew’s Church, Lumley Avenue, Skegness, Lincolnshire.*

NCI is a voluntary organization. They are the eyes along the coast for the emergency services. This display will have a continuous computer presentation of the work carried out.

**Cost: FREE.**

**Booking not required, just drop in! Contact: 01754 612414.**

### Oral History Corner 15

*Daily from Saturday 7th to Sunday 15th 9am to 4pm, Sundays 1pm to 4pm – St Matthew’s Church, Lumley Avenue, Skegness, Lincolnshire.*

The Skegness Heritage Project will have, in addition to the Heritage Trail, an ongoing collection of people’s memories from life in a bygone Skegness. Wash Week will see the very start of this Oral History section of the project, with people being invited to join us in the Oral History Corner to share memories for future generations.

**Cost: FREE.**

**Booking not required, just drop in! Contact: 01754 612414.**

### Treasure Hunt 15

*Daily from Saturday 7th to Sunday 15th 9am to 4pm, Sundays 1pm to 4pm – St Matthew’s Church, Lumley Avenue, Skegness, Lincolnshire.*

The Skegness Heritage Project complete with a Heritage Trail is being planned and the treasure hunt will offer a small contribution to the project. The hunt will be in the form of a questionnaire asking participants to find specific items of interest contained within St Matthew’s Church.

**Cost: FREE.**

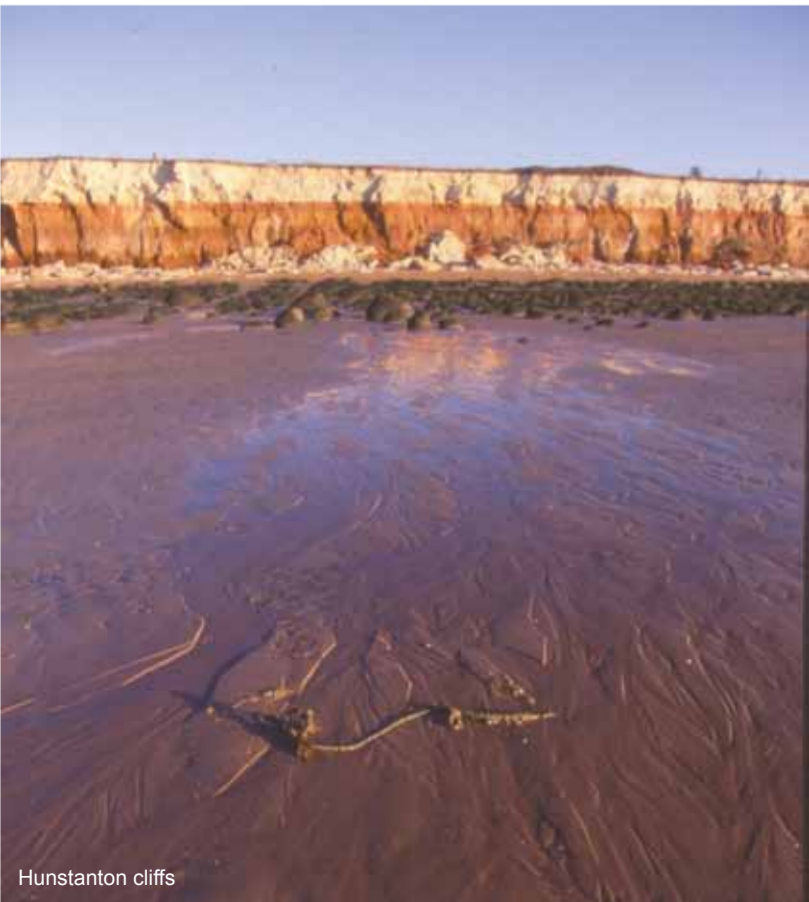
**Booking not required, just drop in! Contact: 01754 612414.**

### A Celebration of Hunstanton Cliffs 5

*Daily from Sunday 8th to Sunday 15th 10am to 4pm – Coal Shed Gallery, Le Strange Terrace, Hunstanton St Edmund, Norfolk.*

Exhibition of photographs, rocks and fossils related to the Hunstanton Cliffs and associated activities during the last 100 years.

**Contact: 01485 532376.**



Hunstanton cliffs

### Working Archaeological Site 21

*Daily from Sunday 8th to Friday 13th 11am to 4pm – Sedgford Historical and Archaeological Research Project (SHARP), Sedgeford, near Snettisham, Norfolk.*

Founded in 1996, the Sedgeford Historical and Archaeological Research Project is a long term, multi-period, multi-disciplinary research project. It was set up to investigate the entire range of human settlement and land-use in a typical north-west Norfolk parish, from the earliest times to the present day. It is currently one of the largest archaeological projects in Britain. The project is democratic archaeology and all that participate have an equal say in how the project is run. 2010 will be the project’s 15th season so why not come along and see what you can unearth!

**Cost: FREE.**

**Booking essential for groups larger than 10. Contact: 01263 510969 up to the 29th June or 07786644980. Website: www.sharp.org.uk**

### The Snettisham RSPB Wader Spectacular 15

*Daily from Tuesday 10th to Sunday 15th times vary – starts at Snettisham RSPB Nature Reserve car park, Snettisham, Norfolk.*

*Tuesday 10th – 5am; Wednesday 11th – 5.40am; Thursday 12th – 6am; Friday 13th – 6.45am; Saturday 14th – 7.45am; Sunday 15th – 8.40am.*

Snettisham is fortunate enough to be host to one of the best bird spectacles in Europe. This is the flight of up to 50,000 wading birds in front of the Snettisham beach and bird hides. This only occurs at certain times of the year and our wader spectacular events are perfectly timed to witness it.

**Cost: £6 for adults, £4 for children, £1 discount for RSPB members.**

**Booking essential. Contact: 01485 210779. Website: www.rspb.org.uk/snettisham**

### Sandringham Craft and Food Fair 12

*Daily from Friday 13th to Sunday 15th 10am to 6pm – Sandringham Estate, Norfolk.*

A three day celebration of the best of British crafts, with specialist demonstration areas from bobbin making to blacksmithing, plus arena events including falconry and archery. There will be a food hall celebrating locally produced food and drink.

**Cost: £6 for adults, £5.50 for OAPs, £2 for children.**

**Contact: 01283 820548.**

## SATURDAY 7TH

### Wildlife on the Lawn 3

*10am to 2pm – Wash Estuary Project Office, c/o South Holland Internal Drainage Board, Foxes Low Road, Holbeach, Lincolnshire.*

Come join the Wash Estuary Project for a family wildlife activity day in their garden. Bring a picnic and enjoy the day. Activities will include mini beast hunting, arts and crafts, a film show and lots more. All children must be accompanied by a responsible adult.

**Cost: FREE.**

**Booking not required, just drop in! Contact: 01406 425518.**

### The Wash Birdwatching Cruise 2

*2.15pm, lasts 4-5 hours – departs from the Sluice Bridge, Boston, Lincolnshire.*

Join the local South Lincs RSPB Group sailing down the Witham into The Wash and up the Welland with Maritime Leisure. Search out all the special wildlife that The Wash has to offer including seals and many types of birds.

**Cost: RSPB Members - £11.50 for adults, £6 for children, non-members - £14 for adults, £7 for children.**

**Booking essential. Contact: 01529 460877.**

## SUNDAY 8TH

### Drawing the Marsh 5

*10.30am to 3.30pm – meet at Woodlands Farm, Kirton House, Kirton, Boston, Lincolnshire.*

A day of drawing with Woodlands Farm artist in residence, Rosie Redzia. Walk along the marsh until a spot is found that will inspire everyone to draw. Event suitable for adults. Children over 11 years welcome but must be accompanied by a responsible adult. Beginners to experienced artists welcome. Please bring a packed lunch.

**Cost: £20 including materials & light refreshments.**

**Booking essential. Contact: Rosie Redzia on 01406 365224.**

**Website: www.woodlandsfarm.co.uk or www.organicdrawing.co.uk**

### Who Made the Hole in That Leaf? 4

*2pm to 4pm – Gibraltar Point Nature Reserve, Skegness, Lincolnshire.*

Ever wondered what insects live in your garden? This walk will give you the tools and knowledge to be able to find out. A local expert will take you on a walk of the reserve and show you how to identify the tracks and signs of insects on the reserve and in your garden.

**Cost: £3 per person.**

**Booking essential. Contact: 01754 898057 – option 1.**

## MONDAY 9TH

### Marvellous Moths 17

*9.30am – RSPB Titchwell Marsh Nature Reserve, Titchwell, Norfolk.*

Weather permitting, join this event outside the visitors centre to examine some of the fantastic moths that have been caught in the moth trap the previous evening.

**Cost: FREE.**

**Booking not required, just turn up! Contact: 01485 210779.**

### Salt Trails Walk 2

*10am to 3pm – meet at the Pilgrim Father’s Memorial, Fishtoft, Boston.*

This is an environmental arts event for all interested in the locality to share. There will be activities along the way, exploring the surroundings with all our senses. We will take time but not travel far, so don't worry if you are not in the habit of walking all day. Suitable for all ages and families but children must be accompanied by a responsible adult.

**Cost: £15 for families, £10 for individuals and concessions. Payment on day.**

**Booking essential. Contact: Jane Frost on 07967 088348 or complete the booking form on www.saltrails.org.**

### Family Acitivites 17

*10am to 4pm – RSPB Titchwell Marsh Nature Reserve, Titchwell, Norfolk.*

Join Titchwell staff around the visitor centre and picnic area for a wide variety of family fun activities ranging from treasure hunts to nature trails and mini beasts to owl pelleting. There will also be things to make and a chance for kids to look at some wildlife under the microscope.

**Cost: FREE.**

**Booking not required, just turn up! Contact: 01485 210779.**

### Animals, Tracks and Signs 1

*11am – meet at Point Green car park, King’s Lynn (through the docks, past Dow chemicals and along the river) or meet the leader at 10.45am and follow them in your car from the Wash Discovery Centre, Green Quay, King’s Lynn, Norfolk.*

Be a nature detective, identify birds and animals tracks and learn what an owl eats through our special owl pellet investigations. Plaster casts will be made of any tracks that you might find which can then be taken home. Children must be accompanied by a responsible adult. This is a Natural England event.

**Cost: FREE.**

**Contact: 01553 818503.**

### Wash and Dry – A Joint Illustrated Talk by The Wash Estuary Project and The Wash and North Norfolk Coast European Marine Site 19

*7pm – Market House, 9 Market Street, Long Sutton, Lincolnshire.*

Learn about The Wash and how it has developed since the last ice age into the internationally important wildlife site it is today. The relationship between man and the natural environment has played an important part in this development. Film show if time allows. Light refreshments will be available.

**Cost: FREE.**

**Booking essential. Contact: 01406 425518.**

## TUESDAY 10TH

### Special Fossil Identification Day 6

*10am to 4pm – Coal Shed Gallery, Le Strange Terrace, Hunstanton St Edmund, Norfolk.*

Join Cindy Howells from the National Museum of Wales. She is a specialist on the life of James Frederick Jackson, the boy geologist, who wrote the definitive work on “The Rocks of Hunstanton and its Neighbourhood” that was first published in 1910.

**Contact: 01485 532376.**



Dragonfly larvae

### Pond Dipping for Children 17

*10.30am and 11.15am, sessions lasts 40 minutes – RSPB Titchwell Marsh Nature Reserve, Titchwell, Norfolk.*

Join RSPB staff at the pond for a spot of pond dipping. Leeches, water boatmen, nymphs, larvae and maybe even a stickleback or two await your child’s net! All equipment provided. Children must be accompanied by a responsible adult.

**Cost: FREE.**

**Booking essential. Contact: 01485 210779.**

## Rock Pool Ramble 6

*10.30am – meet on the green, near the North promenade, Hunstanton, Norfolk.*

See sea creatures on a rock pool ramble. Event is suitable for families. Children must be accompanied by a responsible adult. Please wear suitable clothing and footwear.

**Contact: 01553 818503.**

### Sea Birds and Muddy Beasts 7

*First session 10.30am to 12pm, second session 2pm to 3.30pm – meet 5 minutes prior to start time near the Beach Café, Beach Road car park, Wells-next-the-Sea, Norfolk.*

See the sea birds in Wells harbour and search for muddy beasts on Wells Beach. Investigate the predators and prey of the seashore. Expect to get muddy so old clothes and wellies or old shoes are essential. Children must be accompanied by a responsible adult. One beach wheelchair available, please book in advance if required.

This event is sponsored by The Wash and North Norfolk Coast European Marine Site.

**Booking essential. Contact: 01553 772020.**

### Willow Tree Farm, Site Development and Guided Walk 18

*10.30am to 12.30pm – Willow Tree Farm, Slipe Drove, West Pinchbeck, Spalding, Lincolnshire.*

The Lincolnshire Wildlife Trust and Pinchbeck Parish Council will be giving an insight into the first year of fenland re-creation at Willow Tree Farm.

**Contact: 01778 422107 or email wtfoffice@lincstrust.co.uk.**

### The Little Dig at Hussey Tower 2

*12pm to 4pm – Hussey Tower, Skirbeck Road, Boston, Lincolnshire.*

A special event for children. Come along to Hussey Tower and have a go at being an archaeologist at the Little Dig. Excavate your finds and identify them, find out how old they are and how they were used in the past. Children must be accompanied by a responsible adult.

**Contact: 01529 461499.**

### Super Snakes and Lizards 4

*2pm to 4pm – Gibraltar Point Nature Reserve, Skegness, Lincolnshire.*

Discover the world of snakes and lizards, where they live and what they eat.

**Cost: £2.50 per child.**

**Booking essential. Contact: 01754 898057 – option 1.**

### Fish Buffet followed by a Presentation by Eastern Sea Fisheries Joint Committee - Recent Developments in Inshore Fisheries Management 1

*7pm – The Wash Discovery Centre, Green Quay, King’s Lynn, Norfolk.*

The talk will be an informative, illustrated presentation on aspects of the Eastern Sea Fisheries work relevant to The Wash and North Norfolk Coast. Eastern Sea Fisheries Officers will be available to answer questions after the talk. A fish buffet will be provided.

**Cost: Buffet for Green Quay members - £5, non members - £6. Presentation is FREE.**

**Booking essential. Contact: 01553 818500.**

### Talk on James Frederick Jackson, the Boy Geologist of Hunstanton 6

*7pm – The Town Hall, Hunstanton, Norfolk*

Join Cindy Howells from the National Museum of Wales as she talks about the life of James Frederick Jackson who in 1910 had his small book on the geology of Hunstanton published. James Jackson was an uneducated boy of 15 who had a natural genius and passion for geology. The talk will reveal previously unknown facts behind Mr. Jackson’s Norfolk background and enthralling life story. A Hunstanton Civic Society event.

**Cost: £2.50 in advance, £3 on the evening.**

**Contact: 01485 532376.**

## WEDNESDAY 11TH

### Marvellous Moths 17

*9.30am – RSPB Titchwell Marsh Nature Reserve, Titchwell, Norfolk.*

Weather permitting, join this event outside the visitors centre to examine some of the fantastic moths that have been caught in the moth trap the previous evening.

**Cost: FREE**

**Booking not required, just turn up! Contact: 01485 210779.**

### Royal Air Force on The Wash! 8

*10am to 4pm – Royal Air Force, Durham’s Road, Gedney Dawsmere, Holbeach, Spalding, Lincolnshire, PE12 9NJ.*

Come along to this open day and learn about life on an Air Weapons Range. There will be a short presentation covering aspects of the Range, such as targets, users and conservation followed by a visit along the sea bank to the Air Traffic Control Tower. Appearance of aircraft is weather dependent. Groups of visitors will be escorted.

**Booking essential. Contact: 01406 550364.**



### A Walk on The Wild Side 10

*10am – meet at the Cemetery Gates, Pinchbeck Road, Pinchbeck, Spalding, Lincolnshire.*

Join South Holland District Council’s Nature Conservation Officer on a guided walk through Spalding Cemetery and the Vematt’s Local Nature Reserve, looking at the flora and fauna of these two local Wildlife Sites.

**Contact: 01775 761161.**

### Rock Pool Ramble 6

*11am – meet on The Green, near the North Promenade, Hunstanton, Norfolk.*

See sea creatures on a rock pool ramble. Event is suitable for families. Children must be accompanied by a responsible adult. Please wear suitable clothing and footwear.

**Booking not required, just turn up! Contact: 01553 818503.**

### Evening Marsh Walk 9

*6.30pm – Sea Banks, Wrangle, Lincolnshire.*

Join Wrangle Parish Council for an enjoyable guided walk on the sea banks of Wrangle. Take in the scenery, birds and boats of The Wash. High tide will be at 8.10pm. It will be the second highest in 2010.

**Contact: 01205 270352 or 07776497515.**

## THURSDAY 12TH

### Family Fossil Hunting Along Hunstanton Beach 6

*11am to 1pm – meet on Hunstanton Beach by the cliff, Norfolk.*

Event is suitable for families. Children must be accompanied by a responsible adult. A Natural England and Hunstanton Civic Society event.

**Contact: 01485 532223.**

### Pond Dipping for Children 17

*10.30am and 11.15am, sessions last 40 minutes – RSPB Titchwell Marsh Nature Reserve, Titchwell, Norfolk.*

Join RSPB staff at the pond for a spot of pond dipping. Leeches, water boatmen, nymphs, larvae and maybe even a stickleback or two await your child’s net! All equipment provided. Children must be accompanied by a responsible adult.

**Cost: FREE.**

**Booking essential. Contact: 01485 210779.**

### Sutton Bridge – The Gateway to Lincolnshire 13

*11am – meet at the bridge of Sutton Bridge, Lincolnshire. Park either at the COOP or the Bridge Hotel.*

Join local historian Beryl Jackson for an interesting talk about the history of the bridge at Sutton Bridge, followed by a short stroll along Cross Keys embankment. Until 1831 there was no direct route from Norfolk into Lincolnshire. The walk will illustrate the work of the people who made the landscape as we see it today.

**Cost: FREE.**